

ANNUAL REPORT 2022-23

SPECTRA Organization



Contents

ONE
ACKNOWLEDGEMENT

TWO
ABOUT ORGANIZATION

THREE
FOUNDER'S MESSAGE

FOUR-OUR INITIATIVES
EDUCATION

FIVE
WOMEN EMPOWERMENT

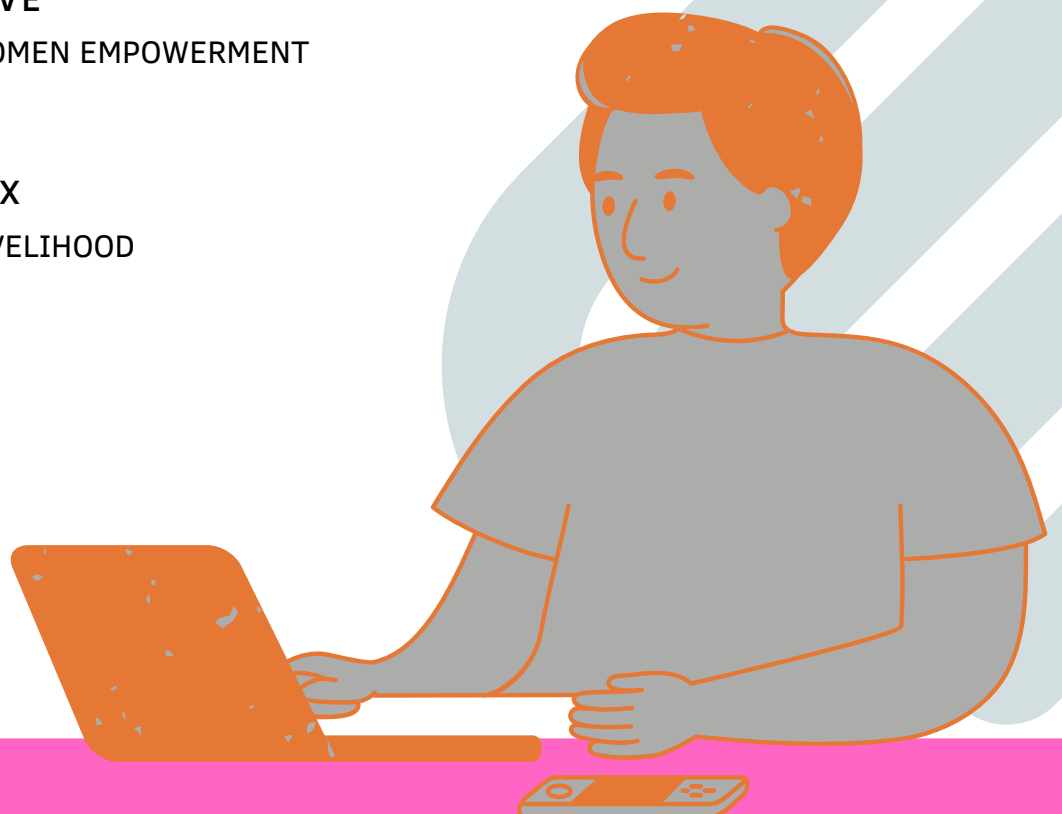
SIX
LIVELIHOOD

SEVEN
NATURAL RESOURCES MANAGEMENT

EIGHT
HEALTH

NINE
FINANCIAL

TEN
Feature stories



ABOUT THE ORGANIZATION

SPECTRA is a voluntary, non-profit and non-government organization, registered under Rajasthan society's act 1958. SPECTRA has been working since 1996 in the rural and interior pockets of Rajasthan to fulfill the educational and other social needs and requirements of the deprived rural population. Spectra org. is committed to a non-institutional approach, follows the principle of democracy, and promotes women's participation in decision-making as part of its program planning, monitoring, and evaluation. Other information deemed relevant to stakeholders may be included, such as a report on operations for manufacturing.

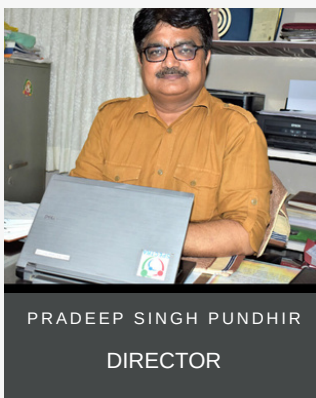
MISSION AND VISION

We at SPECTRA ORGANISATION envision a society where women and children including youth have the guaranteed opportunities of development that enables them exercise their right to education, health, livelihood and social security.

SPECTRA ORGANISATION is dedicated for uplifting the status of women and children including youth especially those from the marginalized section of the society through various development initiatives.



Governing Board



We express heartfelt appreciation to everyone who has been part of SPECTRA's journey since 1996. To the rural communities we serve, our team members, donors, partners, government authorities

local communities, and all contributors, your unwavering support and dedication have driven our mission. Together, we will continue working towards a more equitable and empowered society in Rajasthan. Thank you for your collective efforts and collaborations.

OUR OBJECTIVES



SPECTRA is dedicated to multifaceted rural development initiatives in Rajasthan. Our primary goals include developing and implementing a participatory approach to poverty reduction in watershed and water resource development programs, with a focus on sustainability and replicability. We also prioritize capacity building for both government and NGOs in rural development, particularly in natural resource management and self-help group programs. Additionally, we aim to integrate child recreation centers with mainstream education, promoting innovative teaching methods for improved elementary education quality. Another key objective is to enhance the socioeconomic status of marginalized communities,

including tribes and women, through comprehensive rural development initiatives. Our commitment extends to improving family planning and reproductive health, preventing unintended pregnancies, and advancing respiratory health awareness and treatment. We establish village-based institutions such as societies, savings and credit groups, and self-help groups to strengthen participatory development in agriculture, healthcare, and other vital sectors.





Education



Spectra, in collaboration with IIMPACT, has been operating 144 learning centers in Rajasthan and Haryana since 2013 as part of the Girls' Child Education Program. The initiative focuses on improving girls' education, reintegrating those facing familial challenges, and combating child marriage and labor by increasing enrollment in government schools. Remedial education is provided to dropout and irregular adolescent girls, followed by their mainstreaming into schools.

Furthermore, Spectra, in partnership with the TAP India Foundation, identifies both dropout and never-enrolled children, including girls and boys. It assists their parents with the admission and documentation processes, ensuring school enrollment, and conducts ongoing follow-up and monitoring to promote regular school attendance.

The provided information pertains to the achievements in the Education Project.

144

LEARNING CENTERS

Currently, there are 144 operational learning centers.

1110

IDENTIFICATION OF OOSC

A total of 1,110 out-of-school children including boys and girls have been identified this year and accounted for.

4230

LEARNING CENTERS

In the learning centers, a total of 4,320 girls are actively engaged in their education.

42

VILLAGE ARE IN OUR PFA

Our efforts extend to 42 villages in our area of operation.



Livelihood

Spectra has implemented various initiatives in agriculture, animal husbandry, and entrepreneurship to empower local women to generate additional and enhanced income using innovative approaches. In addition to capacity building for improved practices, Spectra has played a pivotal role in establishing two Producer Companies specializing in agricultural produce, goat rearing, and dairy farming. These initiatives aim to uplift the economic status of women in the community and promote sustainable rural development projects supported by Let's dream foundation and The HANS Foundation.

Spectra empowers local women in agriculture, animal husbandry, and entrepreneurship, fostering income growth and establishing Producer Companies for sustainable rural development.

24

Livelihood Group

24 Livelihood group formed

260

PoP women Mobilized in
Livelihood groups

260 PoP HH women mobilized into
livelihood groups

412

SHGs are functional

412 Self help groups are operational and
functional

4632

Women are participating

4632 women are mobilized into groups

1

Federations constituted

1 Federation(Manch) are operational

2 FPO

2 FPO are functional

2 Farmer producer organization formed



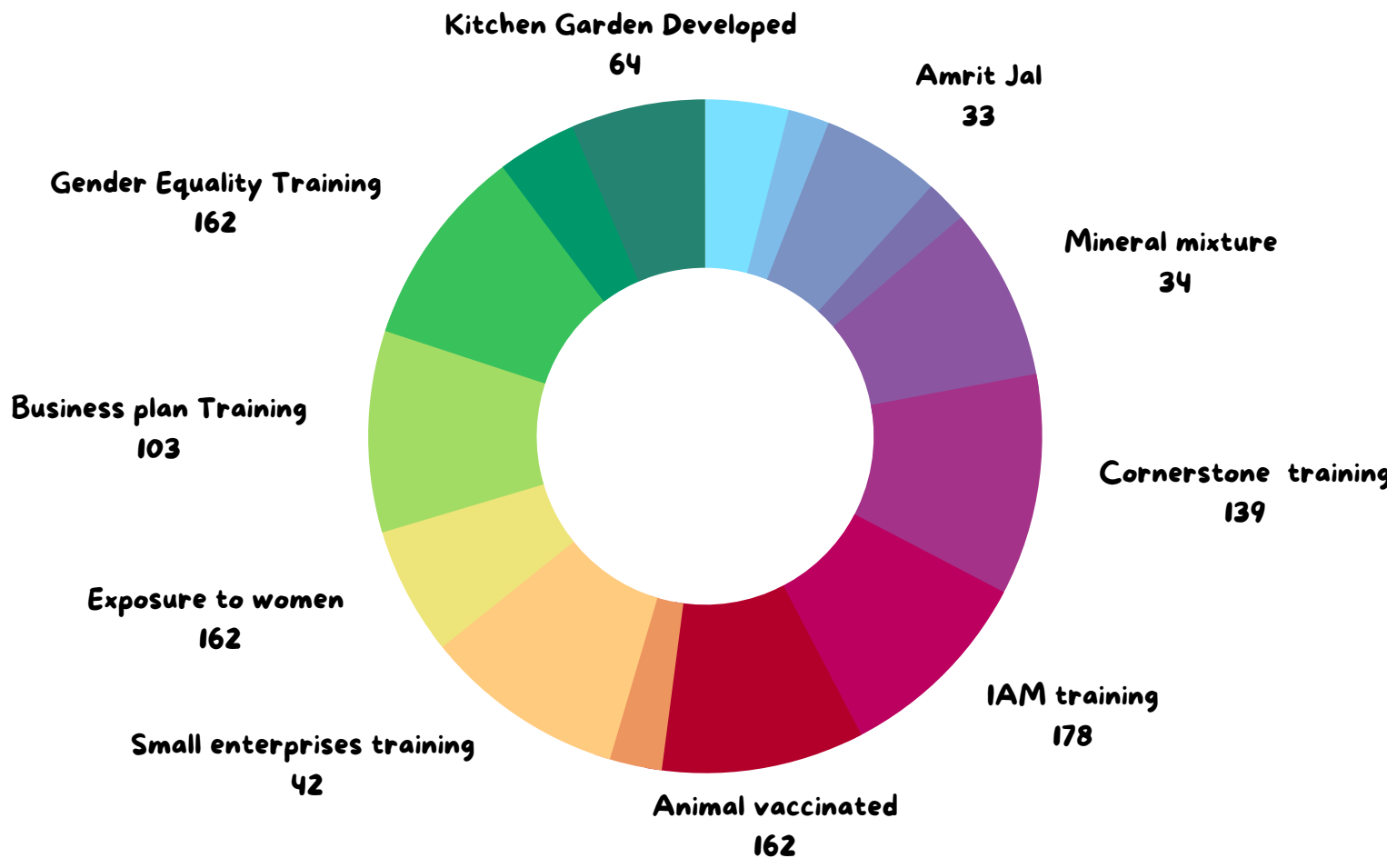
Women Empowerment

Spectra's commitment to women's empowerment and sustainable livelihoods involves building local skills, promoting climate-resilient, low-carbon livelihoods, and addressing the loss of traditional skills. Through strengthening local demand-supply chains and diversifying livelihoods, Spectra aims to meet local demands with local expertise. Their comprehensive activities include vulnerability assessments, community-based adaptation planning, support for diversified livelihoods, and disaster risk reduction. The Community Driven Vulnerability Evaluation Programme, a tool developed by Spectra, identifies vulnerabilities and aids in developing adaptation plans for sustainable livelihoods, ensuring the well-being of local communities.

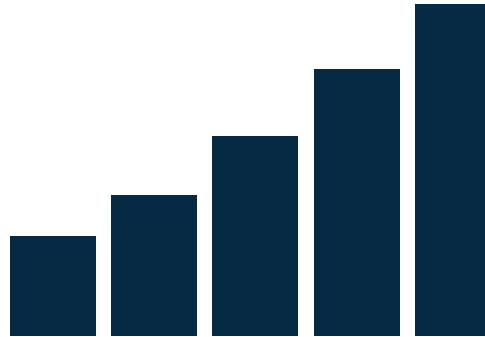
"Empowerment begins with the belief that change is possible and that we have the power to make it happen."



One Year Review



Through various initiatives such as Azola Beds, Vermiculture, Amrit Jal, and training programs like Farmer Field Schools, Mineral Mixture, Cornerstone Training, and Small Enterprises Training, Spectra is actively promoting sustainable agriculture, environmental responsibility, and economic empowerment. These efforts, coupled with Animal Vaccination and the adoption of System of Rice Intensification (SRI) techniques, aim to enhance food security, livelihoods, and community resilience. By ensuring the inclusion of women in these initiatives, Spectra is fostering holistic and equitable development within the community.



NATURAL RESOURCE MANAGEMENT



"Hazipur" and "Khorijhiwana" are both villages that have benefited from watershed development projects supported by NABARD (National Bank for Agriculture and Rural Development). These projects likely aim to improve water resource management, increase water levels, enhance income-generating opportunities, promote rural development, and recharge groundwater sources in these specific villages.

"HAZIPUR AND KHORIJIHAWANA WATERSHED DEVELOPMENT PROJECT."

Watershed development projects are crucial for sustainable agricultural practices, economic growth, and overall betterment of rural communities. The specific activities and outcomes of these projects would be detailed in project reports or documents provided by NABARD.



HEALTH

● KITCHEN GARDEN

- Spectra Organization's training of 250 households in kitchen gardening is a commendable effort to enhance nutrition for children, pregnant women, and lactating mothers. By equipping these families with the skills to cultivate a diverse range of fresh, nutrient-rich produce at home, the initiative not only promotes healthier diets but also fosters self-sufficiency, cost savings, and community resilience

● WASH

- The training of 4,612 women in WASH (Water, Sanitation, and Hygiene) related activities is a pivotal stride toward promoting hygiene, clean water access, and sanitation practices. This initiative empowers women to become leaders in their communities, advocating for improved health and well-being by ensuring safe water sources, proper sanitation facilities, and hygiene education, thus contributing to disease prevention and enhanced living standards.

● NATIONAL NUTRITION MONTH

- Spectra's celebration of National Nutrition Month, as part of the POSHAN Abhiyaan, is a significant endeavor to enhance the well-being of children, adolescent girls, pregnant women, and lactating mothers in India. With a focus on improving nutritional content, delivery, and outreach, this integrated nutrition support program aims to cultivate practices that promote health, wellness, and disease resistance.

● ADOLESCENT HEALTH PROGRAM

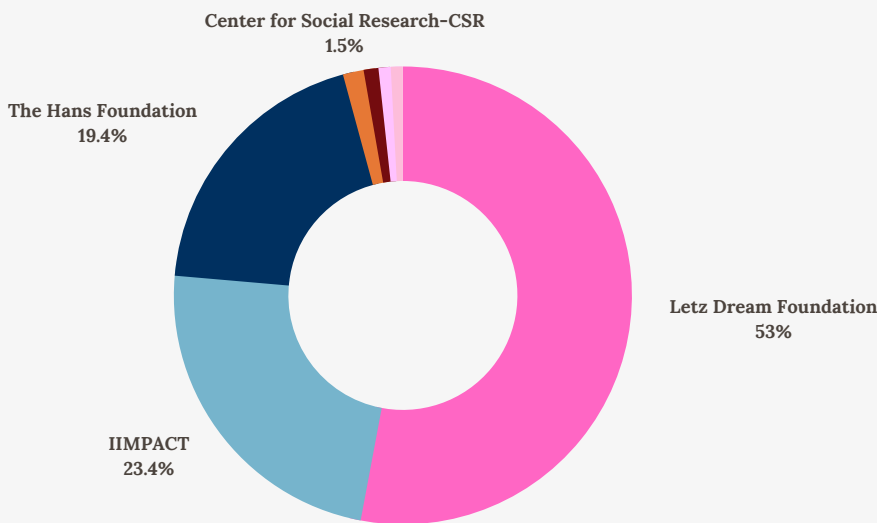
- Training 362 adolescent girls on a Health module is a commendable effort to empower young women with the knowledge and skills needed to prioritize their well-being. This initiative contributes to their overall health and equips them with valuable information to make informed choices about nutrition, hygiene, and healthcare. Such targeted training programs are essential for building a healthier and more resilient generation.

FINANCIAL OVERVIEW

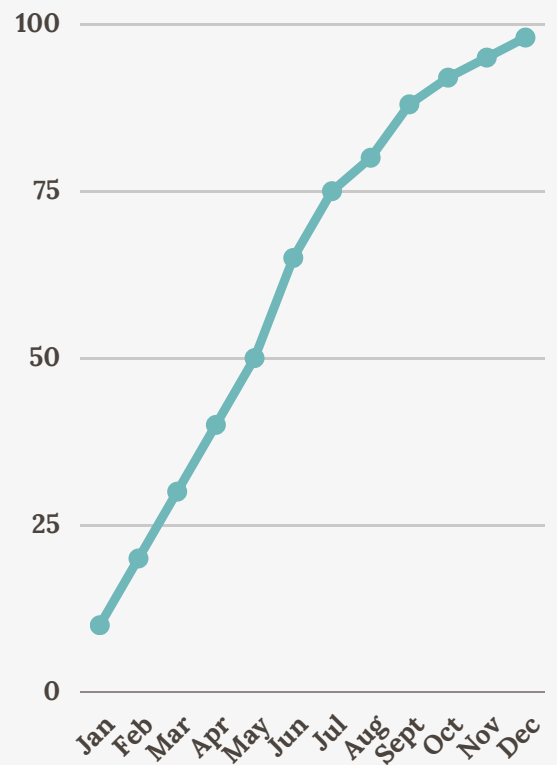
organization has received funds from supporters for various projects in areas such as livelihood, education, women empowerment, health, and more. These funds can play a significant role in addressing various social and development needs within your community or organization's scope of work.

AMOUNT RECEIVED PERCENTAGE BY DONOR

Here is percentage of spending in various programs



SPENDING PERCENTAGE BY MONTH



Contact Us



+91-9414857385



spectraalw@gmail.com



www.spectraalwar.org



SPECTRA ORGANIZATION

Address: E 11, Patel Nagar, Mannaka Road, Alwar (Raj) 301001

If anyone wishes to contact SPECTRA Organization for more information or inquiries related to our r projects and initiatives, they can use the provided address to reach out.

